





## CONTENTS

THE CAVENDISH SUITE PAGE 4

MANSION HOUSE MEETING ROOMS PAGE 6

THE WATERHOUSE SUITE PAGE 8

THE LATIMER MEWS PAGE 10

BANQUETING PAGE 12

BEDROOMS PAGE 14

LEISURE PAGE 16

CAPACITY &amp; TECHNICAL INFORMATION PAGE 18

CONFERENCE &amp; BANQUETING

## WELCOME



De Vere Latimer Estate captures all the magnificence of a distinguished era. As you approach this elegant Victorian manor house along the sweeping driveway, you'll quickly realise this is no ordinary venue. Fully restored to its former glory and set in 30 acres of countryside, with beautiful landscaped gardens, it adds a distinctive touch to any event.

Clean, modern style blends perfectly with classic heritage here. Business meetings, training and team building exercises become experiences to be enjoyed, while smaller functions have a real talking point.

It doesn't take long to discover that the De Vere Latimer Estate has been carefully designed to create a relaxed atmosphere. One that's inspiring and memorable, whatever your event.

Welcome.

LAURIE NICOL  
Chief Operating Officer

## SMART SPACE

— MEETINGS —

We're proud to introduce Smart Space, our new meetings and events service like no other. Available at De Vere, Principal and Partner venues right across the country, it's been meticulously crafted to create unforgettable events. So, whether you want a unique venue in the country or the city, you'll experience exceptional service every time.

## SHOWTIME

— REWARDS —

Showtime is our way of saying thank you for your conference, training and events business. For every enquiry, you'll receive a free Odeon cinema ticket (two if you're a corporate booker). Plus, if you hold your event with us you'll earn points to spend at top high street stores like John Lewis.

SIGN UP FOR FREE AT [SHOWTIME-REWARDS.CO.UK](http://SHOWTIME-REWARDS.CO.UK)

DE VERE LATIMER ESTATE

+44 (0) 1494 545 500

[latimerconference@devere.com](mailto:latimerconference@devere.com)

CONFERENCE &amp; BANQUETING





THE CAVENDISH SUITE

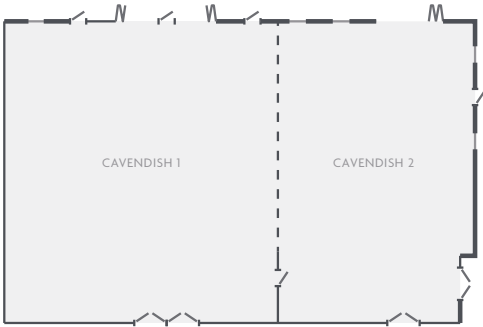


# The Cavendish Suite

SITUATED IN THE NEWLY RENOVATED MANSION HOUSE, OVERLOOKING THE CHESS VALLEY, THE CAVENDISH SUITE IS OUR NEWLY REFURBISHED CONFERENCE AND EVENT AREA.

Perfect for larger events, this beautiful space offers a contemporary, purpose-built conference and banqueting Suite, equipped with the latest technology. Evenly balanced with air-conditioning and flooded with natural light, it's an inspiring area. With its own dedicated lounge and bar for guests to break out into, the adjoining terrace and scenic grounds only add to its versatility.

For full dimensions and capacity details please see page 18.



CAVENDISH SUITE  
Mansion House  
Private terrace and gardens  
Dedicated lounge and bar  
Superfast Wi-Fi up to 300Mb  
Max. capacity: 220



DE VERE LATIMER ESTATE





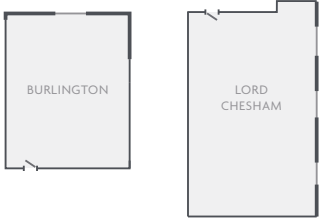
# The Burlington and Lord Chesham Rooms

OUR RICH HERITAGE MEETS CONTEMPORARY DESIGN IN THESE WELCOMING EXECUTIVE MEETING ROOMS.

Enjoy the Burlington, which can accommodate up to 40 people, or host a meeting in the Lord Chesham. Based on the first floor of the Mansion House, with lift access, they offer inspirational and flexible space for meetings and training.

Whether you want to talk business, host a seminar or create a memorable training day, these rooms have the latest technology, to make your day a success. All our meeting rooms offer wall-mounted screens and you can choose from a host of equipment. Just ask and your dedicated events manager will arrange everything.

For full dimensions and capacity details please see page 18.



BURLINGTON & LORD CHESHAM ROOMS  
First floor  
Mansion House  
Lift access  
Superfast Wi-Fi up to 300Mb  
Burlington max. capacity: 18  
Lord Chesham max. capacity: 60

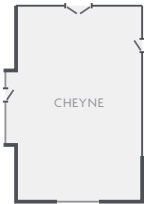


# The Cheyne

THE CHEYNE IS A WELCOMING SPACE FOR BOARD MEETINGS OR A PRIVATE BANQUET.

With traditional period features, including dramatic ceilings and fireplace, The Cheyne is found on the ground floor in the Mansion House. It is connected to The Library Lounge and outside, visitors can enjoy its scenic private terrace with access to the grounds.

For full dimensions and capacity details please see page 18



CHEYNE  
Ground floor  
Mansion House  
Traditional period features  
Superfast Wi-Fi up to 300Mb  
Max. capacity: 35



THE BURLINGTON



THE CHEYNE





THE WATERHOUSE SUITE



WALLACE

THE WATERHOUSE SUITE



WATERHOUSE RESTAURANT



# The Waterhouse Suite

A PURPOSE-BUILT CONFERENCE SUITE,  
OFFERING COMFORT AND EXCLUSIVITY  
IN WELCOMING SURROUNDINGS.

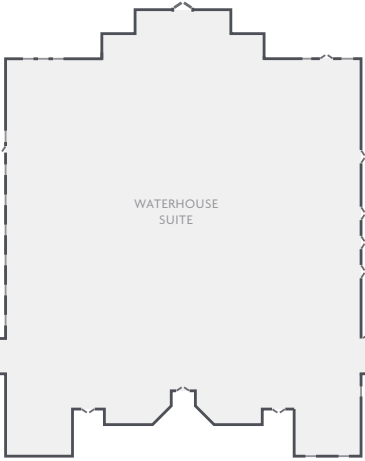
A glass building set in the grounds of the Main House; this beautifully refurbished, versatile conference suite easily splits into three, giving you complete flexibility. With its own reception, your guests will enjoy privacy and exclusivity of this newly refurbished space throughout the day.

Enjoy refreshments in the large atrium lobby or take lunch in the glass-walled private restaurant. And with access to the extensive private grounds, complete with ornamental pond, terrace and high speed outdoor Wi-Fi, it's easy to grab a breath of fresh air during breaks. Our grounds are also a wonderful spot for teambuilding activities.

The Waterhouse Suite is home to an additional two meeting rooms and seven syndicate rooms, plus 51 guest bedrooms with high-speed Wi-Fi throughout.

And when the hard work is over, delegates can take time out in the private lounge and bar before enjoying a meal in the restaurant.

For full dimensions and capacity details please see page 18.



- WATERHOUSE SUITE
- Ground floor with access to grounds
- Main conference space
- Flexible meeting space
- Perfect for exclusive use events
- 51 bedrooms
- Private restaurant
- Burr & Co coffee. to go
- Superfast Wi-Fi up to 300Mb
- Max. capacity: 220

THE WATERHOUSE SUITE





THE BLENHEIM



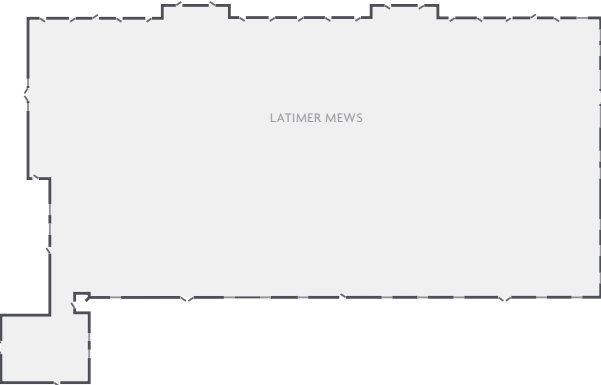
# The Latimer Mews

BLENDING CONTEMPORARY STYLE WITH THE LATEST TECHNOLOGY, THE LATIMER MEWS OFFERS EVERYTHING YOU NEED FOR A SUCCESSFUL EVENT.

Business becomes a pleasure here in the refurbished Mews building. Thoroughly modern, with its light, sleek and contemporary surroundings.

Our lounge is just right for a relaxing break and lunch is an experience to look forward to in the Mews Stable's bar and restaurant. In summer, why not dine al fresco and tuck into a smoky barbecued feast on our sun terrace, complete with high speed outdoor Wi-Fi.

For full dimensions and capacity details please see page 18.



- LATIMER MEWS
- Flexible space
- Three meeting rooms
- Six syndicates
- Private entrance with sun terrace
- Superfast Wi-Fi up to 300Mb
- Max. capacity: 120



THE MINDEN



LATIMER MEWS ENTRANCE





## BANQUETING



Fantastic cuisine in beautiful surroundings has to be one of the greatest rewards.

Whether you choose afternoon tea, sparkling reception drinks or a private dinner on a grand scale, our dedication to detail will delight you. Menus created by our Executive Head Chef have become a celebrated talking point crafted from locally-sourced produce and only the finest ingredients.







# Bedrooms

OUR TASTEFULLY DECORATED INTERIORS ARE SPACIOUS AND WELCOMING, AND THE PERFECT WAY TO UNWIND AFTER A PRODUCTIVE DAY.

Bright and airy, our rooms offer a contemporary yet classic feel. Comfort is the key and you'll find all the latest touches you'd expect from a welcoming hotel right at your fingertips.

We'll give you the choice of a double or a king size bed when you book, as well as the option of a room with a view. Set across the entire estate, you'll discover a variety of Suites, Deluxe and Superior rooms in our Mansion House, while the Waterhouse and Mews offer contemporary styled Guest Rooms.

## CLASSIC ROOMS

Relax in the comfort of our Guest Rooms. Furnished with everything you could need; these classic rooms make an ideal base for work or leisure whilst in Buckinghamshire.

## SUPERIOR

Our Superior rooms combine rich textiles, ambient lighting, flat screen TVs and comfortable chairs to create just the right place to retire and relax. Some feature Juliet balconies and many of the rooms have their own decking that overlooks the Chiltern Hills.

## DELUXE

With elegant décor and space to relax, our luxurious Deluxe rooms are furnished with light, natural finishes and custom details. You'll find everything you need for a relaxing stay, including flat screen TVs and comfortable chairs, while many offer beautiful views across the surrounding landscapes.

## SUITES

Our exclusive Suites offer a truly indulgent experience. Blessed with views of the Chiltern Hills, each room has its own unique features. Wonderfully spacious, with a natural palette you can settle down in front of the flat-screen TV and enjoy the pleasures of room service.

DELUXE, MANSION HOUSE



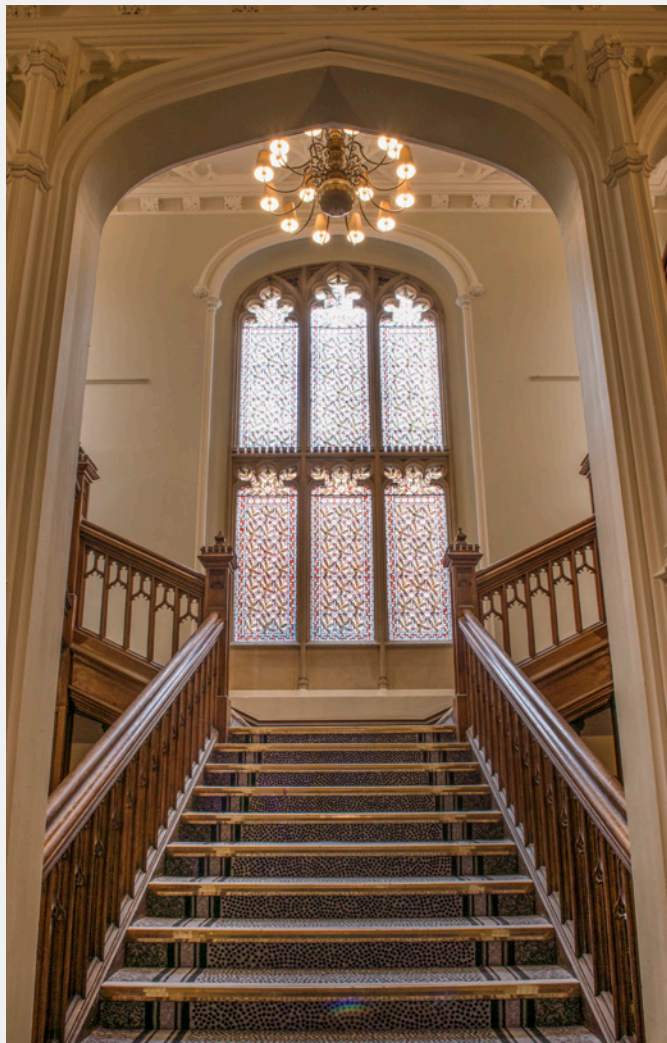
CLASSIC ROOM, WATERHOUSE AND MEWS



SUPERIOR, MANSION HOUSE







LEISURE



Whether you're here for a conference, training or teambuilding, we believe everyone should indulge in a little time for themselves.

Why not try our breakout sessions, inspired by our Group Nutritionist Wendy Martinson, OBE, or rejuvenate with a hot drink from Burr & Co. coffee to go?

Alternately, you can shake off the day's stresses in our gym, then relax in our rejuvenating pool, sauna and steam room. And if you crave some tranquillity, our 30 acres of parkland is just the tonic to refresh mind, body and soul.





# Capacities

ROOM	DIMENSIONS	AREA M²	USHAPE	BOARDROOM	CLASSROOM	THEATRE	CABARET	DINING
LATIMER ESTATE								
Cavendish Suite	20.22 x 12.5 x 3.4	252.75	x	x	x	220	130	200
Cavendish 1	11.66 x 12.5 x 3.4	145.75	x	x	x	150	80	130
Cavendish 2	8.46 x 12.5 x 3.4	105.75	x	x	x	100	40	70
Cheyne	9.6 x 6 x 4	57.6	16	20	x	35	24	40
Burlington	11 x 6 x 3.8	66	x	18	x	x	x	x
Lord Chesham	8 x 6 x 3.8	48	16	24	20	30/60	30	x
WATERHOUSE SUITE								
Waterhouse Suite	15.7 x 14.8 x 3.6 (not incl. stage)	232.3	60	56	150	220	160	150
Waterhouse 1	14.8 x 5.7 x 3.6	84.3	28	28	20	72	40	50
Waterhouse 2	10 x 7.7 x 3.6	77	24	24	24	60	40	50
Waterhouse 3	10 x 7.1 x 3.6	71	24	24	24	60	40	50
Waterhouse 2 & 3	14.8 x 10 x 3.6	148	40	40	40	70	90	100
Wallace	8 x 8.4 x 2.7	67	20	30	24	40	25	30
Pollard	6.2 x 4 x 2.7	24.8	x	12	8	15	x	15
Wyburn	8 x 3.2 x 2.4	26	x	12	8	15	x	x
THE MEWS								
Minden & Crecy	13.1 x 9.8 x 2.7	128.3	38	38	30	120	60	x
Minden	9.8 x 6.5 x 2.7	63.7	22	14	16	60	25	x
Crecy	9.8 x 6.5 x 2.7	63.7	22	14	16	60	25	x
Blenheim	9.8 x 7.7 x 2.7	75.4	24	24	24	70	40	x
Waterloo	7.5 x 5.5 x 2.5	41.25	12	20	24	35	16	30
Stables Restaurant	12 x 7.84 x 2.7	94	28	x	x	x	x	60

## Finding us

You can reach us easily by car, using the postcode HP5 1UG for your sat nav. We're just three miles from the M25 and have plenty of free parking.

We're also just a five minute drive from Chalfont and Latimer train station, which is on the Metropolitan tube line into London. While Heathrow and Luton airports are a 30 minute taxi drive away.

DE VERE LATIMER ESTATE  
Nr Chesham, Buckinghamshire HP5 1UG  
+44 (0) 1494 545 500  
latimerconference@devere.com  
  
DEVERE.COM/DEVERELATIMERESTATE



### LOOKING FURTHER AFIELD?

With over 20 landmark properties across the UK, we're sure to have the hotel you've been searching for. Find out more at [devere.com](https://devere.com)





DE VERE LATIMER ESTATE  
Nr Chesham, Buckinghamshire HP5 1UG  
+44 (0) 1494 545 500  
DEVERE.COM