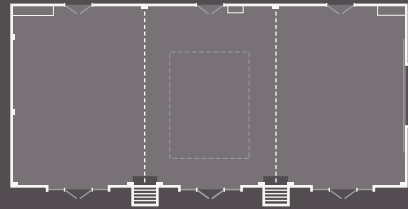
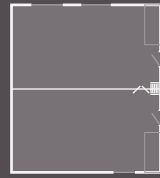


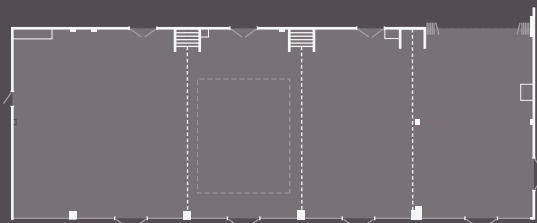
KINGFISHER



CYGNET & WARBLER



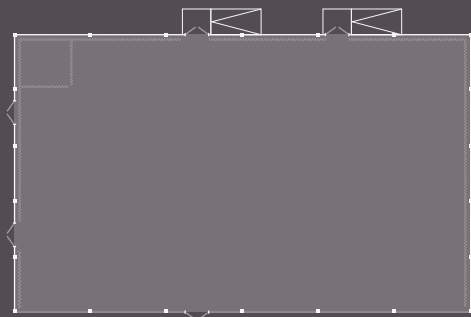
MALLARD



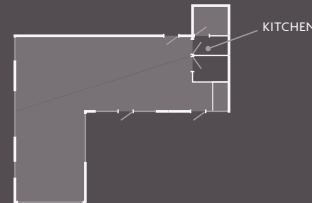
STARLING



WHIMBREL MARQUEE



TEAL



DRAKE



CONTENTS

KINGFISHER SUITE PAGE 4

WHIMBREL MARQUEE PAGE 6

THE MALLARD SUITE PAGE 8

MEETING SPACES PAGE 10

BANQUETING

BEDROOMS & APARTMENTS PAGE 14

LEISURE & SPA PAGE 16

CAPACITY & TECHNICAL INFORMATION PAGE 18

CONFERENCE & BANQUETING

WELCOME



Nestled at the edge of the beautiful Cotswolds, within 56 acres of scenic countryside, this stunning venue is proof that you can mix business with pleasure.

Welcome to De Vere Cotswold Water Park, a conference venue with a difference. With a private lake, nature reserve and woodland, this venue offers a scenic retreat from the distractions of the world outside.

Inside, flexible room layouts combine with intuitive technology and first-rate catering. Add stylish guest accommodation, an onsite pub and extensive leisure facilities and you've got all the ingredients for a successful day.

A meeting for two or a conference for 800, whatever the occasion, our dedicated team will help make your event a success.

Welcome.

LAURIE NICOL
Chief Operating Officer

SMART SPACE

— MEETINGS —

We're proud to introduce Smart Space, our new meetings and events service like no other. Available at De Vere, Principal and Partner venues right across the country, it's been meticulously crafted to create unforgettable events. So, whether you want a unique venue in the country or the city, you'll experience exceptional service every time.

SHOWTIME

— REWARDS —

Showtime is our way of saying thank you for your conference, training and events business. For every enquiry, you'll receive a free Odeon cinema ticket (two if you're a corporate booker). Plus, if you hold your event with us you'll earn points to spend at top high street stores like John Lewis.

SIGN UP FOR FREE AT SHOWTIME-REWARDS.CO.UK

DE VERE COTSWOLD WATER PARK

+44 (0) 1285 864 000

waterparkconference@devere.com

CONFERENCE & BANQUETING



KINGFISHER SUITE



LAKE VIEW



Kingfisher Suite

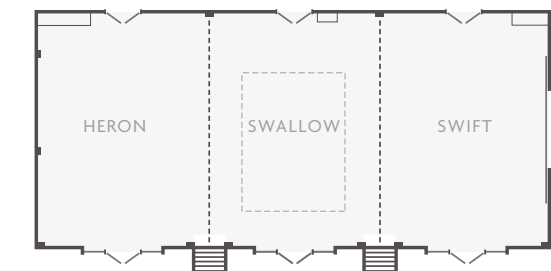
POSITIONED ON THE GROUND FLOOR, WITH FLOOR-TO-CEILING WINDOWS, THIS ENERGISING SPACE IS WORLDS AWAY FROM TRADITIONAL CONFERENCE ROOMS.

A light and airy lakeside suite, the Kingfisher Suite offers magnificent views and is equipped with everything you need for conferences, events, or meetings. With almost 300 metres of flexible floor space, this suite can easily be tailored to suit your event. Keep as one space for functions for up to 370 or split into three for smaller groups.

When you're ready to grab a breath of fresh air, there's direct access to the outdoor decking area. And the adjoining bar is the ideal spot for your delegates to network or socialise. With its own entrance, you can really make this space your own, with privacy and exclusivity for you and your guests.

This modern space provides all the technology you may need during your function with free superfast Wi-Fi up to 100Mb, a PA system, built-in projector and built-in screen.

For dimensions and full capacity details, please see page 18.



KINGFISHER SUITE

- One large space or three smaller spaces
- Lake view
- Access to grounds
- Private bar and breakout area
- PA system
- Large doors to bring in a car
- Dance floor available
- Superfast Wi-Fi up to 100Mb
- Max. capacity: 370 (full suite)

Whimbrel Marquee

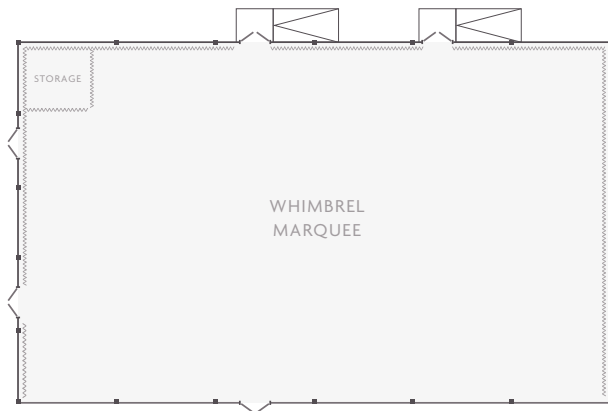
WHEN YOU WANT TO MAKE AN IMPACT FOR YOUR CONFERENCE, BANQUET OR PRODUCT LAUNCH, THE LIGHT-FILLED WHIMBREL MARQUEE IS THE IDEAL CHOICE.

Designed for larger numbers, this permanent, rigid-sided marquee has capacity for 600 guests, or 800 when combined with the adjoining Kingfisher Suite.

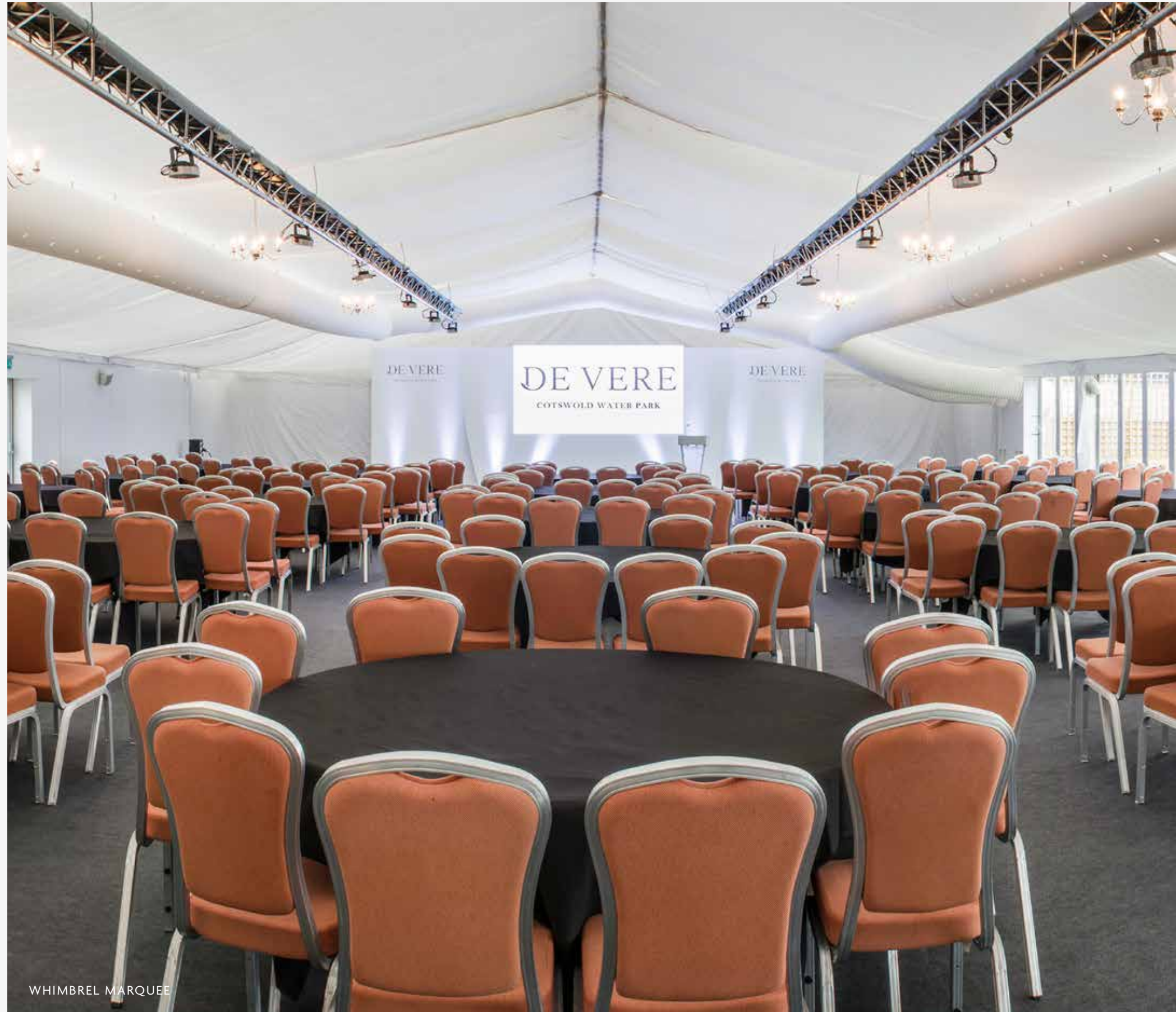
Practical features include mains electric heating, lighting, three-phase power and air-conditioning. The Marquee also has an extra-strong floor which can support vehicles weighing up to 2.5 tonnes, making it a popular choice for product and car launches. Meanwhile, an audiovisual and lighting gantry makes it easy to customise and theme your event, creating a memorable experience for your guests.

Direct access to the patio and outdoor seating area extends this space further, making the most of our idyllic setting and stunning lake views.

For dimensions and full capacity details, please see page 18.



- WHIMBREL MARQUEE
- Natural daylight
- Lake view
- Rigid-sided structure
- Superfast Wi-Fi up to 100Mb
- Max. capacity: 600



WHIMBREL MARQUEE



The Mallard Suite

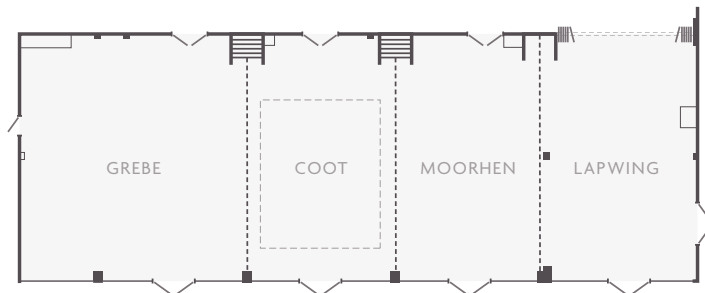
FOR MEETINGS SMALL AND LARGE, THE MALLARD SUITE IS FLEXIBLE BUT ALWAYS COMFORTABLE.

With space for up to 400 guests, The Mallard Suite can be easily partitioned into four separate areas, making it ideal for all types of conferences, corporate days, training or exhibitions.

Impressive floor-to-ceiling windows invite natural daylight into the space and offer fantastic views over the lake, providing a refreshing atmosphere for corporate events.

And when your guests want to take time out, the adjoining bar, Burr & Co. coffee to go, and private balcony are just the thing for reflecting and relaxing together as a team.

For dimensions and full capacity details, please see page 18.



- THE MALLARD SUITE
- Lake view
- Adjoining balcony
- Private bar and breakout area
- Burr & Co. coffee to go
- Superfast Wi-Fi up to 100Mb
- Max. capacity: 400 (all four sections)
- Max. capacity: 320 (three sections)



THE MALLARD SUITE BALCONY

THE MALLARD SUITE



Meeting spaces

WELCOME TO OUR CONFERENCE AND MEETING SPACES. A CHOICE OF THREE ROOMS OFFERING PRACTICAL AND FLEXIBLE SPACE, TAILORED TO YOUR EVENT.

THE DRAKE SUITE

Flexible seating options make The Drake Suite ideal for private dinners or smaller conferences. Here you'll find all the technology you need to deliver engaging presentations, with a built-in projector and screen, plus free superfast Wi-Fi. A private breakout area offers a welcoming spot for arrival drinks or portable bar, as well as nutritionally balanced breakout snacks, inspired by Group Nutritionist Wendy Martinson, OBE.



THE DRAKE SUITE
Private breakout and lounge area
Superfast Wi-Fi up to 100Mb
Max. capacity: 126

THE STARLING SUITE

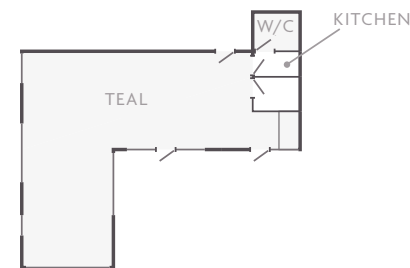
Welcome your guests with arrival drinks on the nearby mezzanine. Then head into The Starling Suite where you'll be greeted by fantastic views across the lake. Large floor-to-ceiling windows create an energising light-filled space. And with air-conditioning, your guests can enjoy the day in comfort. Flexible seating options make this space ideal for private dinners or smaller conferences.



THE STARLING SUITE
Lake view
Floor-to-ceiling windows
Superfast Wi-Fi up to 100Mb
Max. capacity: 80

THE TEAL BOARDROOM

Enjoy privacy and comfort for your next meeting in The Teal Boardroom. With fantastic views of the lake and its own private balcony, kitchen, and toilet facilities, this space is ideal when you need a peaceful and discreet space away from the world.



THE TEAL BOARDROOM
Lake view
Private balcony
Kitchen
Toilets
Burr & Co. coffee to go
Superfast Wi-Fi up to 100Mb
Max. capacity: 16

A smaller lounge area offers a welcoming spot for a drinks reception, with hot drinks from Burr & Co. coffee to go, whilst our free superfast Wi-Fi up to 100Mb, keeps business running smoothly.

For dimensions and full capacity details, please see page 18.



THE DRAKE SUITE



THE TEAL BOARDROOM

OUTDOOR DINING



BANQUETING



BANQUETING



Business lunch or corporate banquet; treat yourself to a meal to remember.

Enjoy spectacular views from a choice of dining spaces overlooking the lake, with delicious menus tailor-made for you. From private dining and formal lunches to hot and cold buffets, our banqueting menus are expertly created by our Executive Chef using only the freshest locally-sourced produce. Our dedicated conference and banqueting team will ensure your event is exactly as you imagined it.

Bedrooms & Apartments

RELAX IN STYLE AT THE END OF THE WORKING DAY.

A choice of rooms and suites offers you a calming place to unwind and recharge. An overnight stay is the best way to make the most of our wonderful location with many of our rooms offering spectacular views across the lake.

The natural theme continues with our interiors. Inspired by nature, our rooms feature elements such as wood and stone, creating a relaxing and contemporary environment. Light and airy, these luxurious spaces are beautifully furnished and include all the little extras needed for a comfortable stay.

With free superfast Wi-Fi up to 100Mb, a working desk, and tea and coffee making facilities, you can catch up on emails, or simply relax and enjoy the hotel's idyllic location.

DOUBLE/TWIN

Thoughtfully furnished, our standard Double and Twin rooms offer a tranquil place to relax.

LAKE VIEW DOUBLE/TWIN

Elegant décor and pretty furnishings are topped only by the spectacular views of the lake.

SUPERIOR DOUBLE

Enjoy a little more space in our Superior Double rooms where you'll find a range of extras such as a bathrobe, luxury toiletries and treats.

LAKE VIEW SUPERIOR DOUBLE

Relax in style as you take in wonderful vistas across the lake, enjoying the space and comfort of our Superior Double with lake views.

DELUXE DOUBLE

For the ultimate luxury, choose one of our Deluxe Double rooms. Here you'll enjoy beautiful lake views, plus the perfect spot to sit and reflect with your own private balcony. Our Deluxe room welcome pack provides a range of little treats to make your stay extra special.

SUITES

Stretch out in luxurious surroundings in our spacious Suites. With separate dining, lounge and bedroom areas, our Suites boast views of the lake with the option of a balcony. You'll also find our Suite welcome pack with a range of little extras to make your stay even more comfortable with bathrobes, local alcoholic treats, deluxe toiletries and bottled water.

APARTMENTS

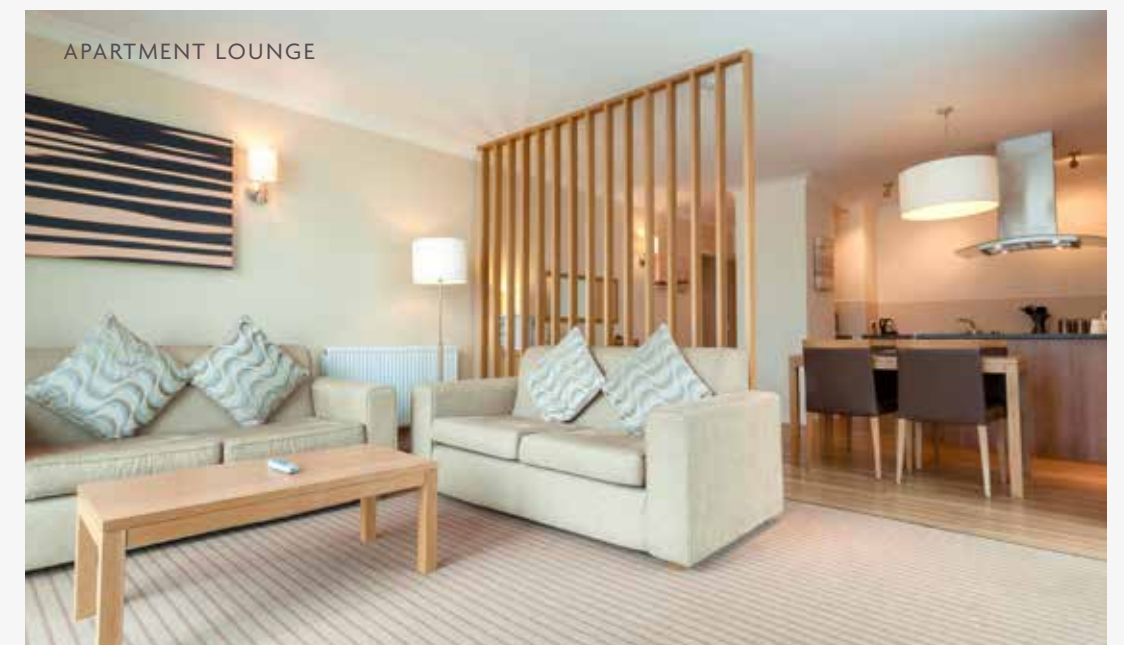
Beautiful décor combined with home-from-home comforts. With a lounge area and kitchenette, our one, two and three-bedroom apartments offer everything you need for a memorable stay.



LAKE VIEW DOUBLE



REFURBISHED DOUBLE



APARTMENT LOUNGE



SWIMMING POOL, SPA 6



THE OLD BOATHOUSE PUB



BRASSERIE



EXTERIOR



THE OLD BOATHOUSE DECKING AREA



EXTERIOR FROM THE LAKESIDE



LOUNGE AND BAR



GYM

LEISURE



At the end of a productive day you deserve a spot of relaxation. And whether it's a post-conference sauna or a pre-dinner swim, you can make full use of the leisure facilities in Spa 6.

Enjoy a massage or beauty treatment, unwind in the relaxation suite, or work up a sweat in the state-of-the-art gym. Once refreshed, bond with your colleagues over a drink in the onsite pub, The Old Boathouse, or relax in the lounge and bar.



Capacities

ROOM NAME	DIMENSIONS L X W X H (M)	FLOOR SPACE (M ²)	THEATRE	CLASSROOM	BOARDROOM	U-SHAPE	CABARET	DINNER
Kingfisher	25.83 x 11.25 x 3.54	291	370	204	x	80	224	250
1 Section (Heron, Swallow or Swift)	8.61 x 11.25 x 3.54	97	118	84	26	30	64	x
2 Sections	17.22 x 11.25 x 3.54	194	244	120	x	60	144	160
Whimbrel Marquee	30.0 x 18.0 x 4.7	540	600 (550 BP)	350 (300 BP)	x	x	460 (400 BP)	500 (450 BP)
Drake Suite	15.7 x 6.9 x 3.11	109	126	49	x	x	64	80
Widgeon	10.8 x 6.9 x 3.11	68	80	36	26	29	60	90
Tern	4.8 x 6.9 x 3.11	41	30	18	14	12	16	x
Mallard (All 4 sections)	33.9 x 12.1 x 3.11	410	400	220	x	92	256	320
Mallard (3 sections)	26.4 x 12.1 x 3.11	319	320	180	x	80	208	250
Grebe	11.4 x 12.1 x 3.11	138	110	60	34	38	80	x
Coot	7.5 x 12.1 x 3.11	91	80	36	24	29	48	x
Moorhen	7.5 x 12.1 x 3.11	91	90	42	24	32	48	x
Lapwing	7.5 x 12.1 x 3.11	91	90	42	24	32	48	x
Grebe & Coot	20.0 x 12.1 x 3.11	242	200	108	68	x	128	180
Coot & Moorhen	15.0 x 12.1 x 3.11	181	160	96	48	42	96	120
Moorhen & Lapwing	15.0 x 12.1 x 3.11	181	160	96	48	42	96	120
Cygnets & Warbler	10.39 x 5.62 x 2.55	58	60	33	26	29	32	x
Cygnets	5.27 x 5.62 x 2.55	30	35	18	14	12	x	x
Warbler	5.27 x 5.62 x 2.55	40	25	18	10	x	x	x
Swan	7.56 x 5.32 x 2.55	40	x	x	16	x	x	x
Dipper	5.12 x 2.87 x 2.55	15	x	x	4	x	x	x
Sandpiper	5.12 x 2.87 x 2.55	15	x	x	4	x	x	x
Starling	11.0 x 7.5 x 2.55	68	80	36	26	29	50	x
Meeting rooms 1, 3 & 4	3.5 x 7.0 x 2.55	25	25	6	12	9	x	x
Meeting rooms 2 & 5	3.5 x 5.33 x 2.55	19	15	x	8	x	x	x
Curlew	3.5 x 10.36 x 2.55	36	40	18	24	21	x	x
Teal	4.72 x 9.45 x 2.55	45	x	x	16	x	x	x

Finding us

We're easy to reach by car via the M4 or M5. Simply pop GL7 5TL into your sat nav. Please note that the postcode is not recognised on older sat navs before the hotel was built. We therefore recommend planning your journey in advance. You can find full directions on our website.

DE VERE COTSWOLD WATER PARK
 Lake 6, Spine Road East,
 South Cerney GL7 5FP
 +44 (0) 1285 864 000
 waterparkconference@devere.com
 DEVERE.COM/COTSWOLDWATERPARK



LOOKING FURTHER AFIELD?

With over 35 landmark properties across the UK, we're sure to have the hotel you've been searching for. Find out more at phcompany.com



DE VERE COTSWOLD WATER PARK
Lake 6, Spine Road East, South Cerney GL7 5FP
+44 (0) 1285 864 000
DEVERE.COM